



Company Presentation

***MCM SUBSEA ENGINEERING***

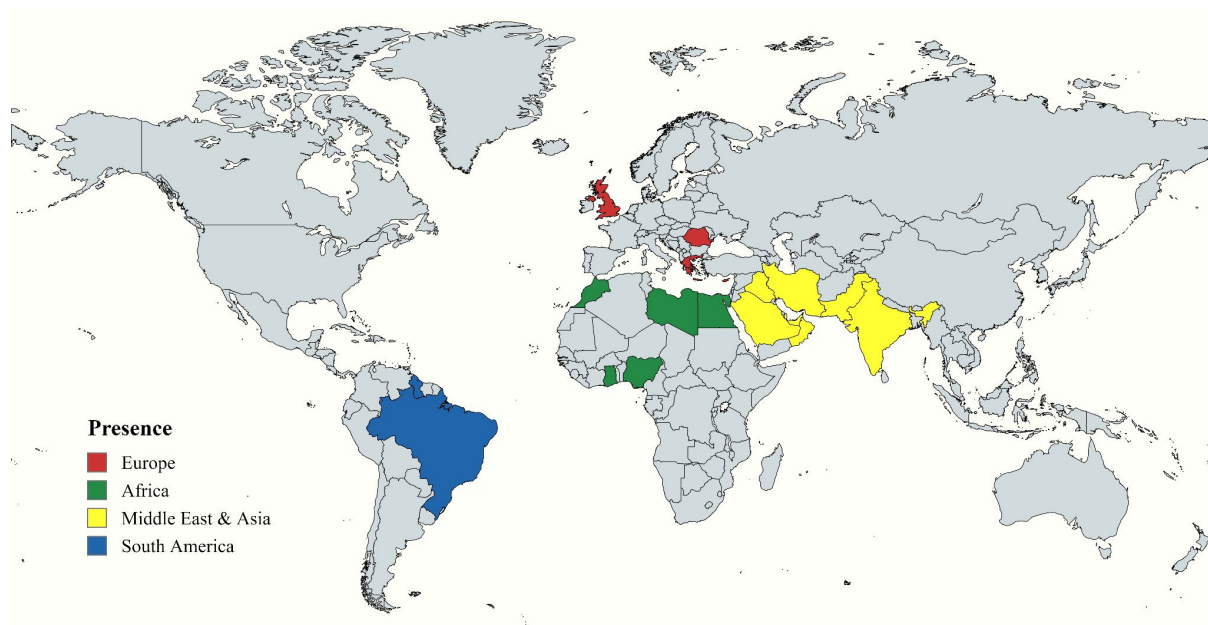
# I : Introduction to *MCM SUBSEA ENGINEERING*



# MCM at first sight



- 30 years of experience in the subsea engineering and marine construction business.
- Presence in 4 continents with the will to expand further more.
- A multinational team consisting of fully trained staff and special equipment.
- 120+ projects



## Countries:

- |                        |            |
|------------------------|------------|
| - Greece               | - Qatar    |
| - Cyprus               | - Oman     |
| - Romania              | - Pakistan |
| - United Kingdom       | - Iran     |
| - Morocco              | - Iraq     |
| - Libya                | - India    |
| - Egypt                | - Brasil   |
| - Ghana                | - Guyana   |
| - Nigeria              |            |
| - Saudi Arabia         |            |
| - United Arab Emirates |            |



An aerial photograph of a vast floating solar farm. The solar panels are arranged in neat, parallel rows that stretch across a large body of water. In the foreground, a small blue boat with several people on board is positioned near the solar array. The people appear to be wearing safety gear, suggesting they are workers. The water is calm, and the sky is clear. In the far distance, a shoreline with some buildings and trees is visible.

II : Our projects



# Some of the types of projects undertaken



***Pipelines***



***Shipwreck Salvage***



***Subsea Cables***



***Floating Solar Farms***



***Harbour and Marina  
Constructions***



***Dam Operations***

### III : Notable Projects





# Ayia Napa Marina



## About the project

- Construction of the marina breakwater with the use of 10,000 tetrapods.
- Placement of concrete blocks.
- Reconstruction of the seabed.
- Installation of floating docks.



Most advanced marina construction in the Mediterranean.

Location:

- Ayia Napa , Cyprus

Duration:

- 3 years

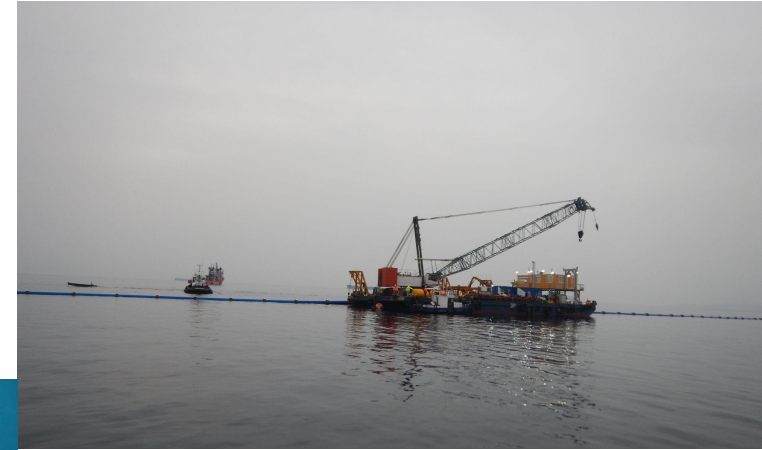
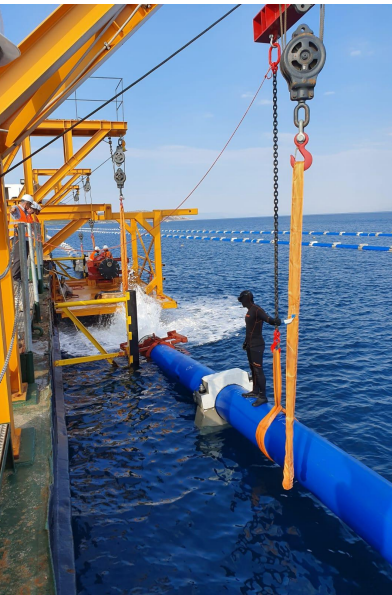
# Pipeline Connecting the Islands Salamina and Aegina



## About the project

- Creating a secure anchor point for the pieces of the pipe (as it was placed in separate pieces).
- Installing the pipe and connecting the pieces.
- Covering the entire pipeline with Articulated Concrete Block Mattresses (ACBM).

Longest underwater pipeline in Greece



## Location:

- Salamina & Aegina , Greece

## Pipeline:

- HDPE
- Transfers drinking water
- Max depth 100m
- Length 14km

## Duration:

- 4 years



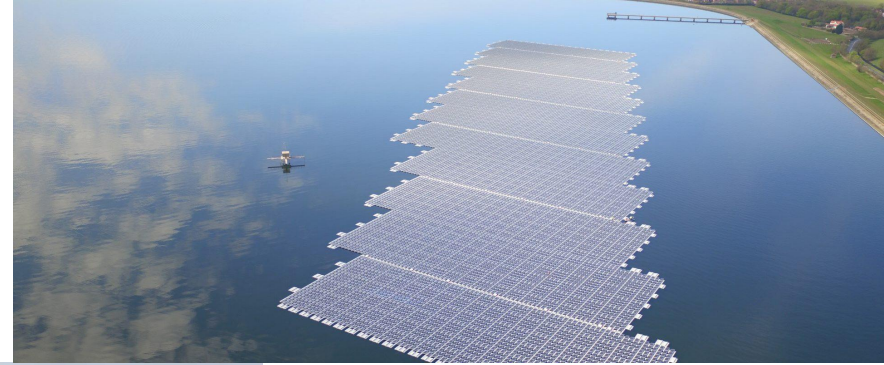
# Queen Elizabeth II Reservoir Floating Solar Farm



## About the project

- Placing anchors on which the solar panels will be attached.
- Towing the solar panels and securing them in place.

First floating solar farm in the world



## Location:

- London , UK

## Size:

- 6.3 MW
- 23,046 Panels
- Surface area 57,000m<sup>2</sup>

## Duration:

- 6 months

# Repairing the Salamina - Aegina Pipeline



## About the project

- The pipeline which we had previously placed became a victim of terror attack with explosives.
- This created holes in the pipe preventing it from transferring water to the island of Aegina.

The pipeline has suffered multiple terror attacks.



## Location:

- Salamina & Aegina , Greece

## Max Depth:

- 12 - 50m





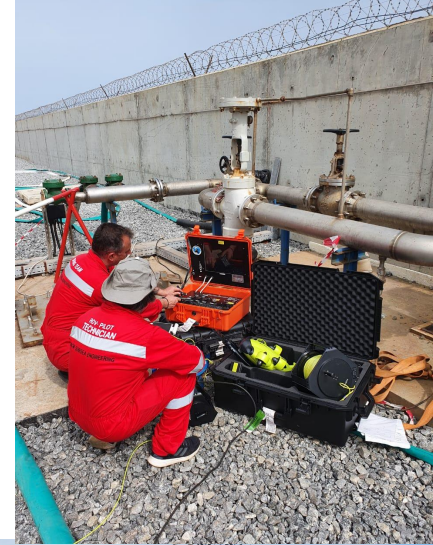
## IV : Team and Equipment

# Our team



Our team consists of :

- Fully trained and certified diving personnel
  - Fully trained and certified ROV pilots and technicians
  - Equipment technicians
  - Engineers
  - Project managers
  - Electricians
  - General workers
- Diver supervisors and superintendents
  - ROV Supervisors
  - Topographers / Surveyors







# Main Light equipment

- Scuba diving equipment
- Hydraulic drills
- Hydraulic saw
- Hydraulic Chainsaw
- Underwater metal detectors
- Air Supply systems



- Diver camera and lights
- Diver monitor panels
- Diver communications and panels
- Kirby Morgan helmets and bandmasks
- Air compressors
- Generators



# Equipment for Heavy Operations

## Diver and ROV Container

Size - 10ft

### Equipment:

- Monitors for divers and ROVs.
- Surface supply panel for 3 divers
- CCTV system
- Umbilical
- Kirby Morgan Helmets and Band Masks

## Decompression Chamber in Container

Size - 20ft

### Equipment:

- Twin-lock Decompression Chamber
- Surface supply panel for 3 divers
- Umbilical
- Kirby Morgan Helmets and Band Masks







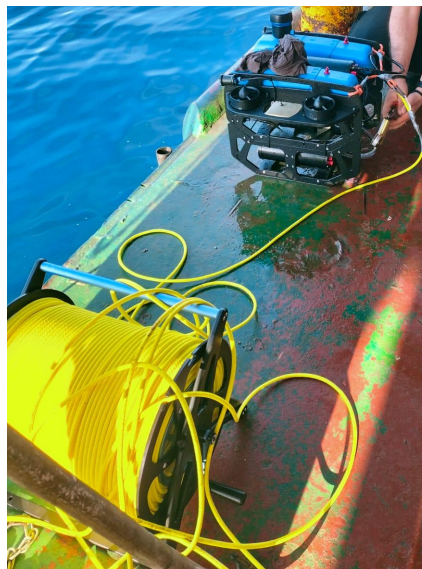
# Remotely Operated Underwater Vehicles (ROV)

x1 Blue ROV

Max depth - 300m

Equipment:

- Sonar
- Portable control panel
- Manipulator



x1 Seabotix LBV-150

Max depth - 150m

Equipment:

- Sonar
- Portable control panel
- Manipulator



x7 Fifish V6s / V6 Expert

Max depth - 100m

Equipment:

- Portable control panel
- Manipulator



V : Partners and Clients







## Some of Our Partners and Clients





# ***MCM SUBSEA ENGINEERING***

## Contact Information

### **Marios Mylonas**

T: +30 698 8282 716

E: [mariosmylonas12@yahoo.gr](mailto:mariosmylonas12@yahoo.gr)

E: [mcmsubsea1@gmail.com](mailto:mcmsubsea1@gmail.com)

### **Vasileios Mylonas**

T: +30 693 6905 080

E: [mlonasvasilis.vm@gmail.com](mailto:mlonasvasilis.vm@gmail.com)

E: [mcmsubsea1@gmail.com](mailto:mcmsubsea1@gmail.com)

**[mcm-subsea-engineering.com.cy](http://mcm-subsea-engineering.com.cy)**